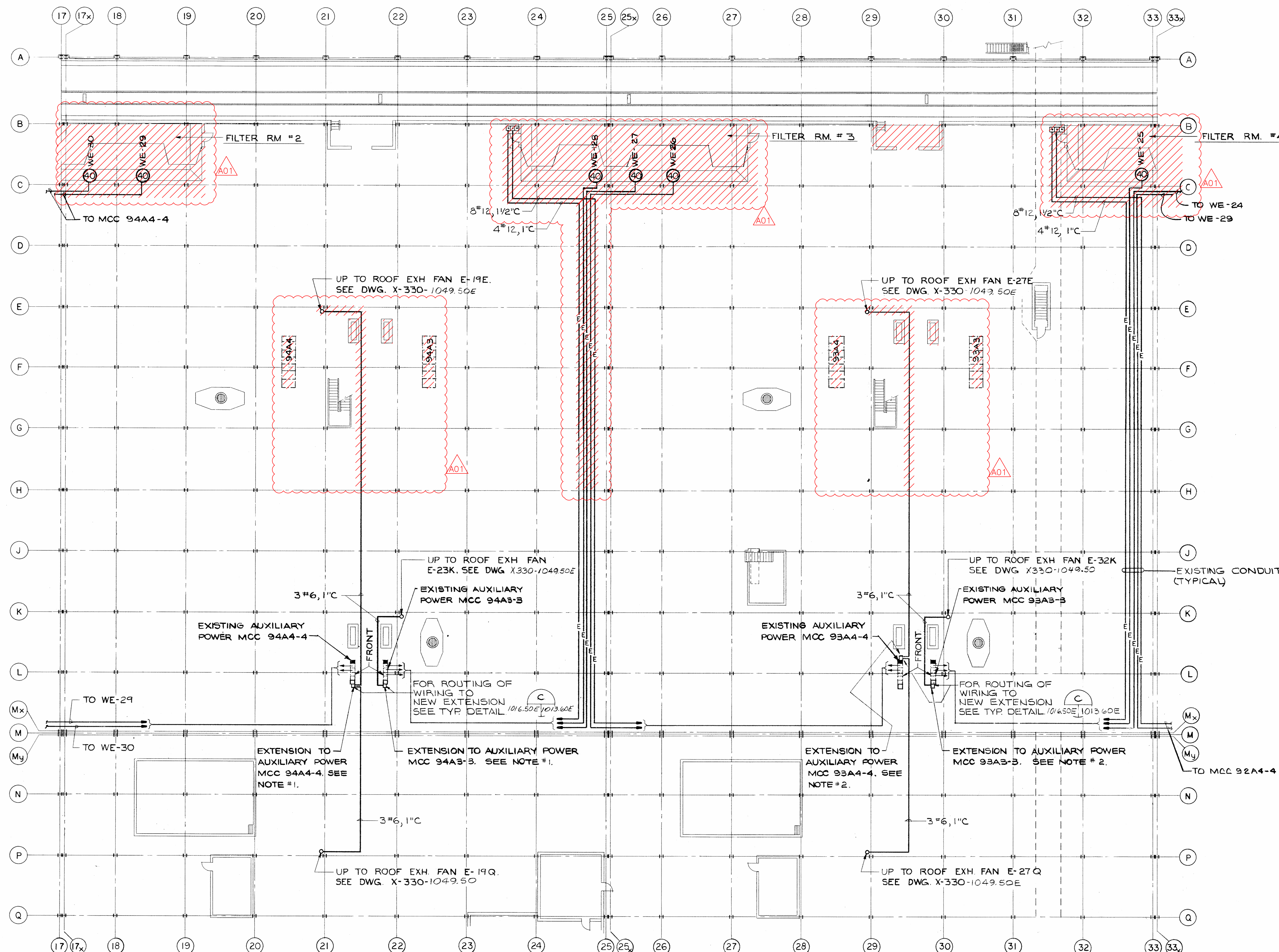


NOTES:

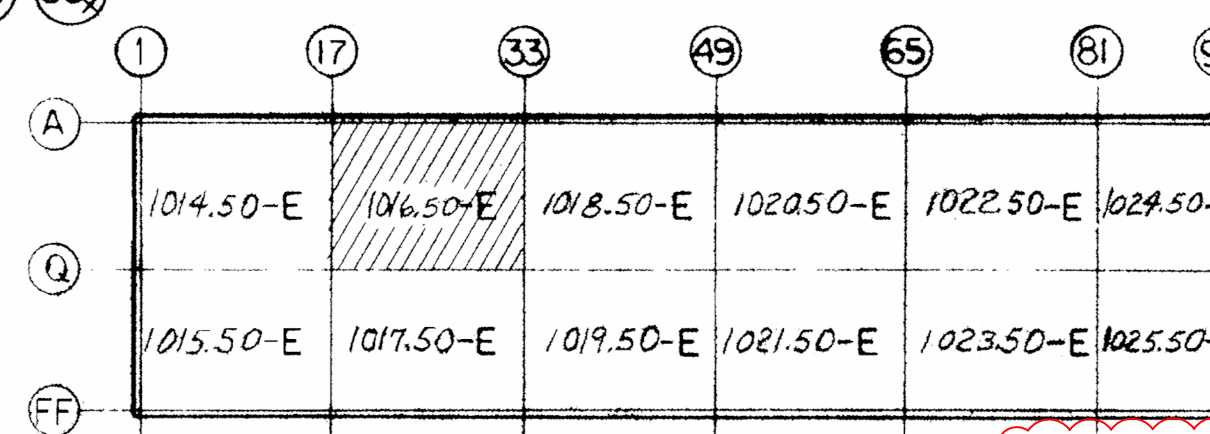
1. REFER TO X-330-1005.51E FOR ONE LINE DIAGRAM AND MOTOR CONTROL CENTER ELEVATION.
2. REFER TO X-330-1006.51E FOR ONE LINE DIAGRAM AND MOTOR CONTROL CENTER ELEVATION.



REMOVE ALL EXISTING ELECTRICAL WIRING AND COMPONENTS WEST OF COLUMN LINE H

SHEET WHERE
DETAIL OR
SECTION IS
CUT

SECTION & DETAIL LEGEND



KEY PLAN

* DESIGN MANAGER:
APPROVAL AND DATE:

This document has been reviewed and is
UNCLASSIFIED and NOT UCN. This review
does not constitute clearance for public
release.

#192

DIGITAL SIGNATURE

Authorized Derivative Classifier

Date

BASE DOCUMENT: X-330-1016.50E REVISION 0

POOR QUALITY ORIGINAL
CAD OVERLAY

A01 CFC PER ESO E6663-001		CAL	LPW	DN	DN	*DIG SIG
AS BUILT & CHANGED DWG NO. 1016.50E DIFFERS X-330-1016.50E PROJ. 44820 DELETED TABLE TRAJECTORY CONTROL CENTER EXTENSION SC 311 CERTIFIED FOR CONSTRUCTION (C 311)						
B APPROVED-TITLE II		J.T. MILLONAY 12-16-75 10-31-75				
A FOR APPROVAL-TITLE II		J.T. MILLONAY 12-16-75 10-31-75				
REV. NO.	ISSUE PURPOSE	APPROVED INITIALS & DATE				
UNITED STATES						
ENERGY RESEARCH and DEVELOPMENT ADMINISTRATION						
Giffels Associates, Inc.						
Architects Engineers Planners			Detroit, Michigan 48226			
ERDA Contract No. AT-(40-1)-4517			GA Project No. 7395 9			
DRAWING TITLE						
PROCESS VENTILATION						
X-330 BUILDING AUXILIARY						
POWER OPERATING FLOOR						
PART PLAN NUMBER 3						
DRAWING APPROVED DATE	DRAWING APPROVED DATE	DRAWING APPROVED DATE				
10-31-75	12-16-75	12-16-75				
J.E. WASHINGTON	C.W. ROBINSON	J.T. MILLONAY				
ARCHITECT	OPERATOR	ENGINEER				
DATE	CHECKED	DATE	SCALE			
10-31-75	12-16-75	12-16-75	1/16" = 1'-0"			
R.J. TOWNSEND	10-31-75	12-16-75				
PROJECT	DRAWING NUMBER	REV. NO.				
CASCADE PROGRAM	X-330-1016.50E	A01				
PORTSMOUTH, OHIO						