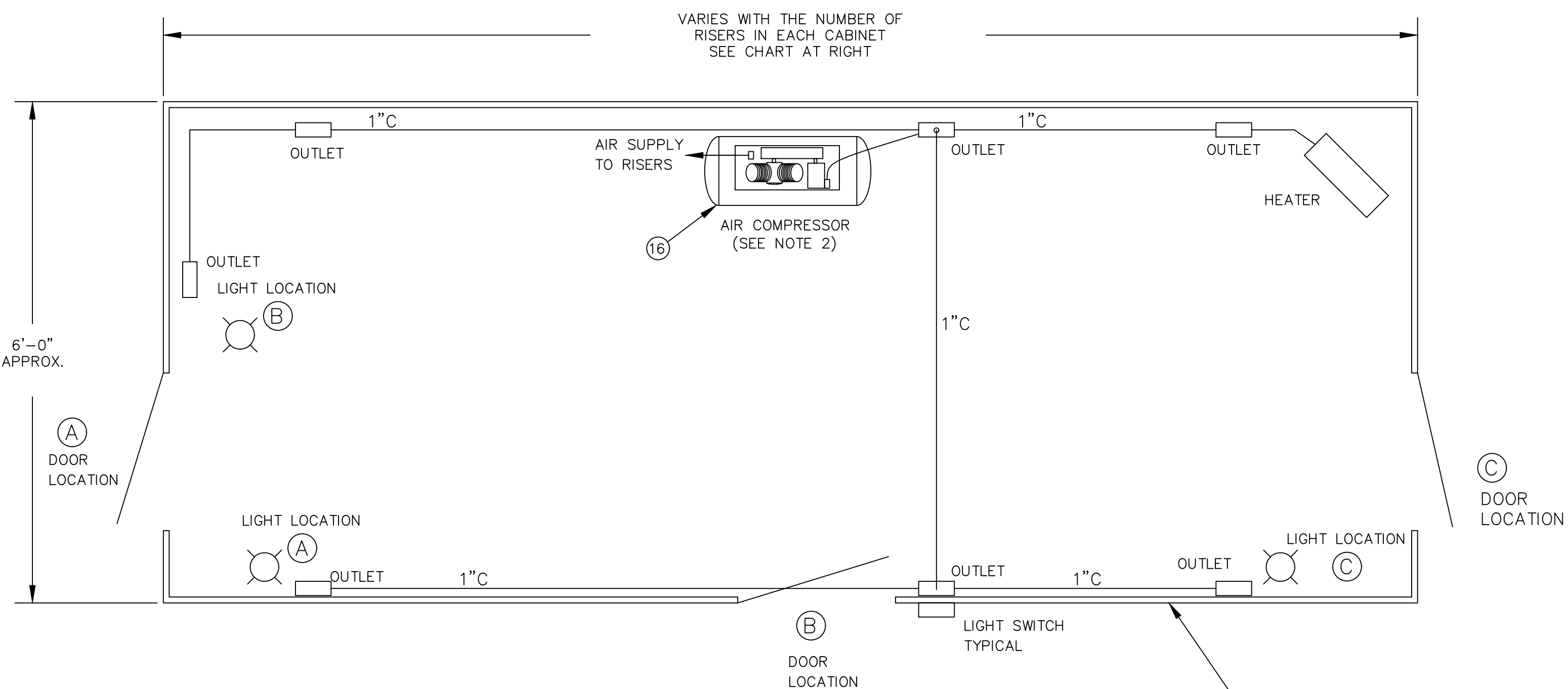


TYPICAL 120/208 VOLT PANEL & LOAD FOR TWO RISER HOUSES

NOTE: THE NUMBER OF 30A, DOUBLE POLE BREAKERS AND 20A SINGLE POLE BREAKERS WILL VARY ACCORDING TO THE NUMBER & TYPE OF RISER HOUSINGS.



PLAN OF RISER CABINETS

DUE TO FIELD CONFIGURATIONS
RISER CABINETS ARE NOT ALL
THE SAME. SEE THE CHART AT
THE RIGHT OF THIS VIEW FOR
GENERAL CABINET INFORMATION

- RISER CABINETS ARE CONSTRUCTED FROM GALVANIZED SHEET METAL

DOORS ARE SOLID FABRICATED
FROM STEEL & PAINTED TAN

X-330 EAST RISER CABINET SCHEDULE					
SYSTEM	SPRINKLER	ENCLOSURE	DOOR LOC	AIR COMP	COMMENTS
281	X	135"x 72" x 92"	Front/Center	AC-10	
282	X				
283	X	72" x 90"x 92"	Front/Left	AC-11	
284	X	72" x 90"x 92"	Front/Left		
285	X	90" x 72" x 92"	Front/Left	AC-12	
286	X	90" x 72" x 92"	Front/Left		
287	X	72" x 90" x 92"	Front/Left	AC-13	
288	X	72" x 90" x 92"	Front/Left		
289	X	90"x 72"x 92"	Front/Left	AC-14	
291					
292	X				
293	X	180"x 72"x 92"	Front/Center	AC-15	
294	X				
295	X	72"x 90"x 92"	Front/Left	AC-16	
296	X	90" x 72" x 92"	Front/Left		
297	X	72" x 90" x 92"	Front/Left	AC-17	
298	X				
299	X	180"x 72" x 92"	Front/Center	AC-18	
311	X				
312	X	180" x 72" x 92"	Front/Center	AC-19	
313	X				
314	X	135" x 72" x 92"	Front/Center	AC-20	
315	X				
316	X	180"x 72"x 92"	Front/Center	AC-21	Cabinet wraps around Col. EE-37
317	X	90" x 72" x 92"	Front/Left		
318	X	90" x 72" x 92"	Front/Right	AC-22	
319	X	90" x 72" x 92"	Front/Left		
321	X	90" x 72" x 92"	Front/Left	AC-23	
322	X	90" x 72" x 92"	Front/Left		
323	X	90" x 72" x 92"	Front/Left	AC-24	
324	X	90" x 72" x 92"	Front/Left		
325	X	90" x 72" x 92"	Front/Left	AC-25	
326	X				
327	X	135" x 72" x 92"	Front/Center	AC-26	
328	X	90" x 72" x 92"	Front/Left		
329	X	90" x 72" x 92"	Front/Left	AC-27	

General Note: All cabinets incomplete at time of walk-down 07-24-2008

X-330 SOUTH RISER CABINET SCHEDULE

SYS#	SPRINKLER	ENCLOSURE	DOOR LOC.	AIR COMP.	COMMENTS
331	X	72" x 48" x 92"	Right Side	AC-28	
332	X	72" x 48" x 92"	Left Side		
333	X	90" x 72" x 92"	Front/Left	AC-29	
334	X	72" x 48" x 92"	Right Side		
335	X	90" x 72" x 92"	Front/Left	AC30	
336	X	90" x 72" x 92"	Front/Left		
337	X	135" x 72" x 92"	Front/Left	AC-31	
338					

General Note: all cabinets incomplete at time of walk-down 07-24-2008

X-330 NORTH RISER CABINET SCHEDULE

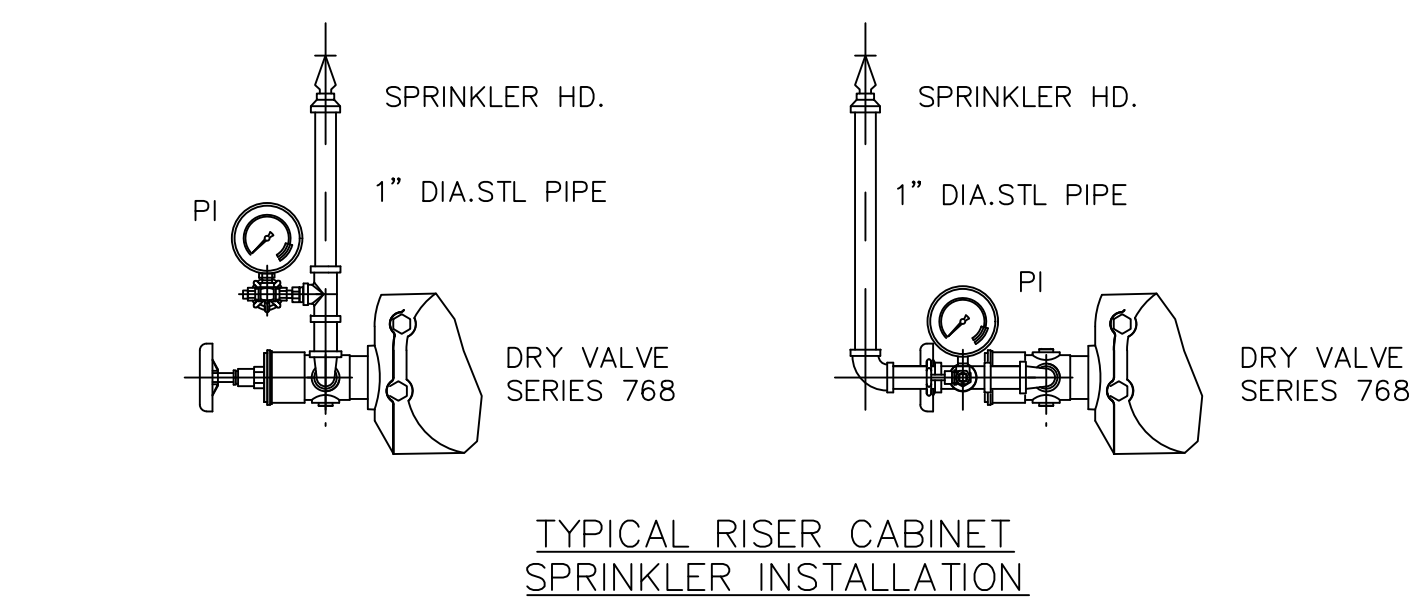
SYSTEM	SPRINKLER	ENCLOSURE	DOOR LOC	AIR COMP	COMMENTS
352	X	90"x 72"x 96"	Front/Left	AC-1	
353	X	90"x 72"x 96"	Front/Left		
354	X	90"x 72"x 96"	Front/Left	AC-2	
355	X	90"x 72"x 96"	Front/Left	AC-3	
356	X	90"x 72"x 96"	Front/Left	AC-4	
357	X	90"x 72"x 96"	Front/Left		
358	X	90"x 72"x 96"	Front/Left	AC-5	
359	X	90"x 72"x 96"	Front/Left		
361	X	90"x 72"x 96"	Front/Left	AC-6	
General note: cabinets incomplete at time of walk-down 07-21-2008					

X-330 WEST RISER CABINET SCHEDULE

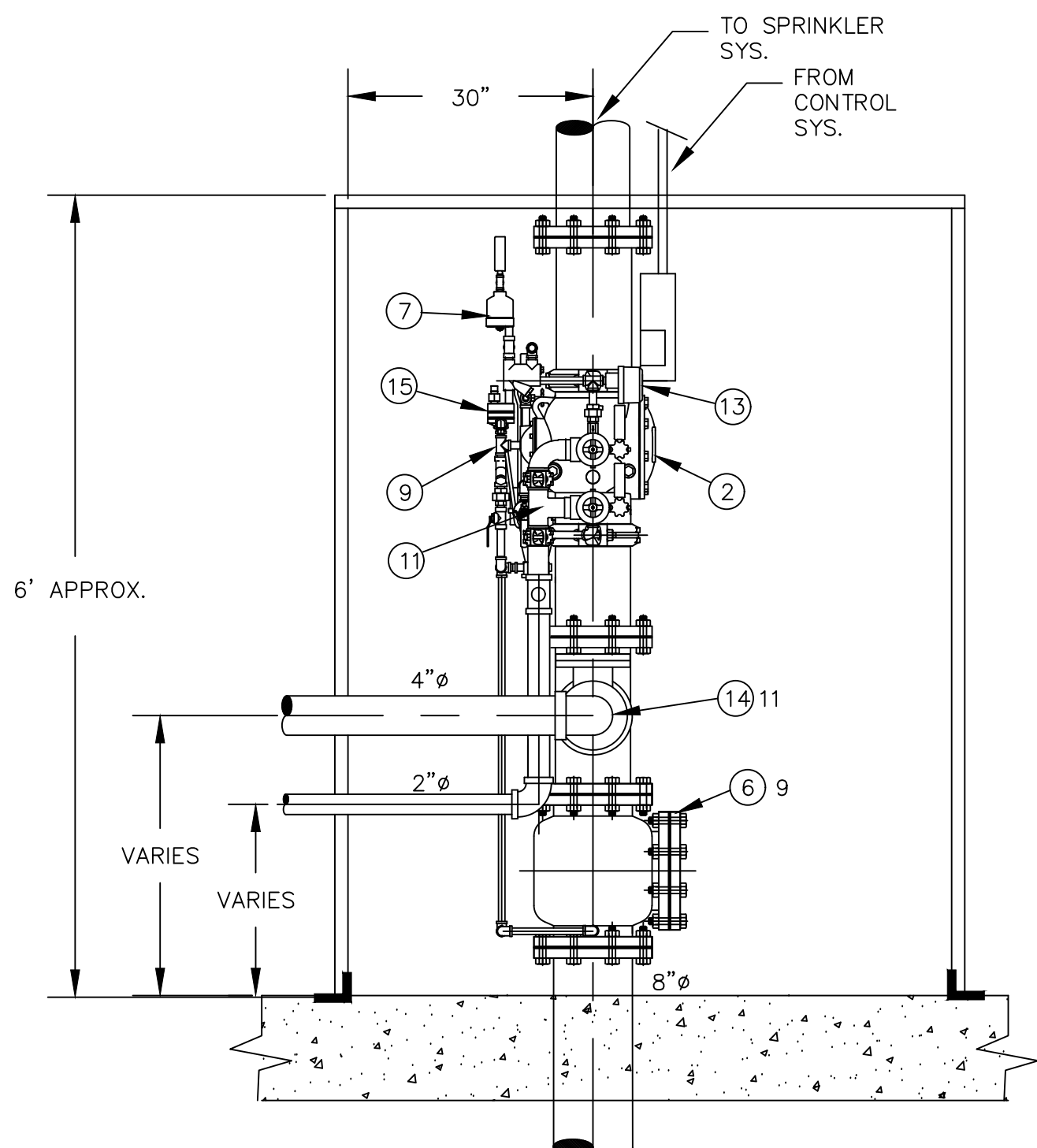
SYS#	SPRINKLER	CLOSURE	DOOR LOC.	AIR COMP.	COMMENTS
362	X	90"x72"x92"	Front/Right		
363	X	90"x72"x92"	Front/Left	AC-32	
364	X	90"x72"x92"	Front/Left	AC-33	
365	X	90"x72"x92"	Front/Left		
366	X	90"x72"x92"	Front/Left		
367	X	90"x72"x92"	Front/Left	AC-34	
368	X	90"x72"x92"	Front/Left	AC-35	
369	X	72"x90"x92"	Front/Right		
371	X	90"x72"x92"	Front/Left		
372	X	90"x72"x92"	Front/Left	AC-36	
373	X	90"x72"x92"	Front/Left	AC-37	
374	X	90"x72"x92"	Front/Left		
375	X	90"x72"x92"	Front/Left		
376	X	90"x72"x92"	Front/Left	AC-38	
377	X	90"x72"x92"	Front/Left		
378	X	90"x72"x92"	Front/Left	AC-39	
379	X	90"x72"x92"	Front/Left		
381	X	90"x72"x92"	Front/Left	AC-40	
382	X	90"x72"x92"	Front/Left	AC-41	
383	X	90"x72"x92"	Front/Left		
384	X	90"x72"x92"	Front/Left	AC-42	Air Compressors at systems 384 & 386 inter-connect with all three systems.
385	X	90"x72"x92"	Front/Left		
386	X	90"x72"x92"	Front/Left	AC-43	
387		135"x72"x92"	Front/Left	AC-44	
388	X				
389	X	90"x72"x92"	Front/Left		
391	X	90"x72"x92"	Front/Left	AC-45	
392	X	90"x72"x92"	Front/Left		
393	X	90"x72"x92"	Front/Left	AC-46	
394	X	90"x72"x92"	Front/Left		
395	X	90"x72"x92"	Front/Left		
396	X	90"x72"x92"	Front/Left	AC-48	
397	X	90"x72"x92"	Front/Left		
398	X	90"x72"x92"	Front/Left	AC-49	

General note: All cabinets incomplete at time of walk-down 07-24-2008

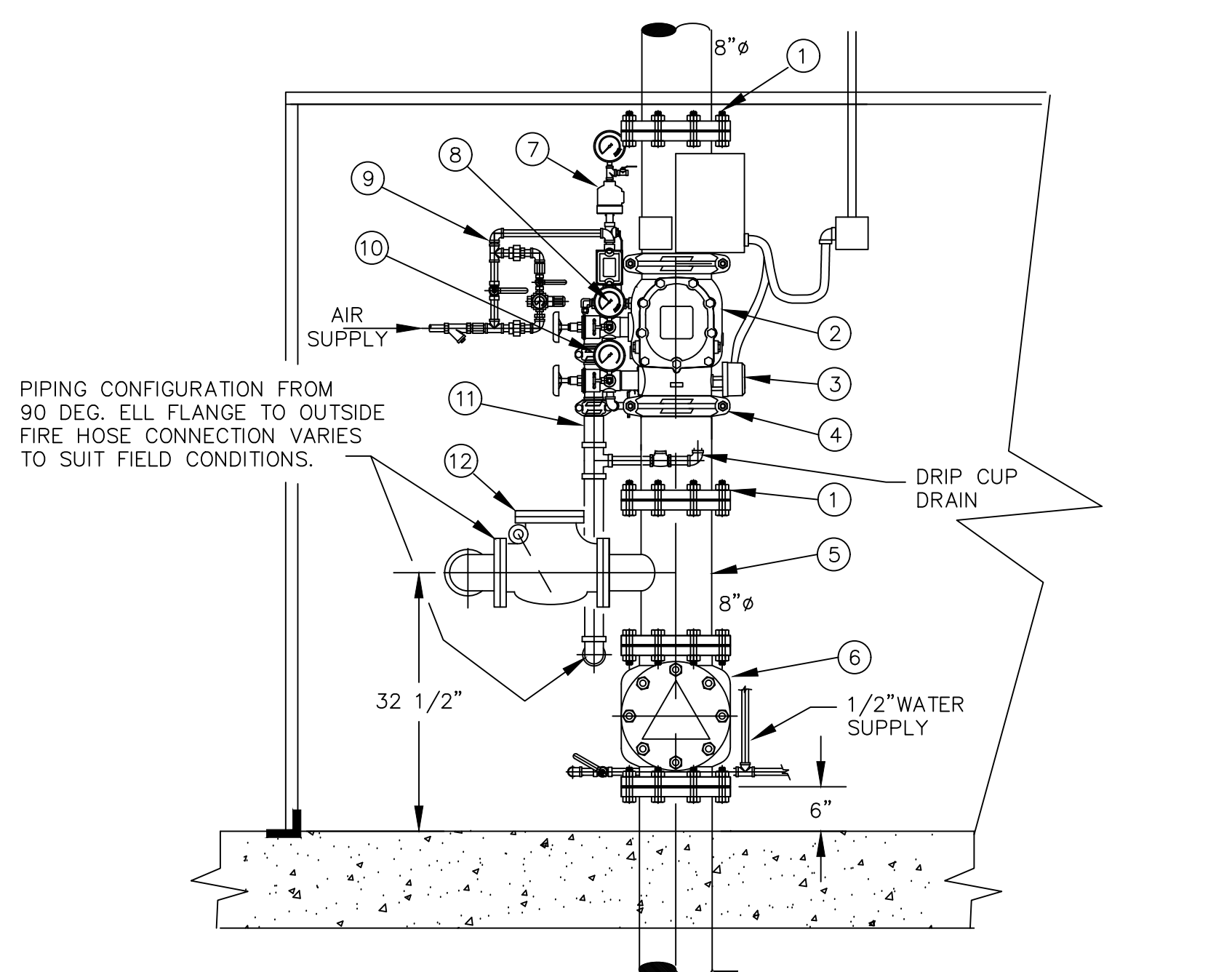
General note: All cabinets incomplete at time of walk-down 07-24-2008



TYPICAL RISER CABINET
SPRINKLER INSTALLATION



TYPICAL LEFT SIDE VIEW
DRY SYSTEM RISER
INSTALLATION
(SEE NOTE 1)



TYPICAL DRY SYSTEM RISER
INSTALLATION W/VICTAULIC
FIRELOCK NXT DRY VALVE
SERIES 768
(SEE NOTE 1)

- NOTES:

1. THE ORIENTATION/LOCATION OF THE RISER COMPONENTS ABOUT (OR RELATIVE TO) THE VERTICAL AXIS VARIES TO SUIT FIELD CONDITIONS.
2. COMPRESSOR LOCATION IS ALONG AN INSIDE WALL OF THE ENCLOSURE, BUT IT VARIES FROM ONE ENCLOSURE TO ANOTHER TO SUIT FIELD CONDITIONS.
3. ELECTRICAL COMPONENTS LIKE THE LIGHT, THE AIR COMPRESSOR, AND THE HEATER HAVE PIG TAIL TYPE CORDS AND ARE PLUGGED INTO ELECTRICAL OUTLETS TO FACILITATE REMOVAL AND/OR REPLACEMENT.
4. SYSTEMS 386, 387, 388, 389, 391, 392, 393, 394, REMOVED AOT
5. SPRINKLER SYSTEMS SHALL NOT BE REMOVED UNTIL APPROVED BY THE DEPARTMENT OF ENERGY.

ITEM	DESCRIPTION	SOURCE
1	150# WELD NECK FLANGE	
2	SERIES 768 FIRELOCK NXT DRY VALVE	VICTAULIC
3	ALARM PRESSURE SWITCH	VICTAULIC
4	FIRELOCK RIGID COUPLING	VICTAULIC
5	FORGED STEEL FLANGED TEE	
6	8" ALARM VALVE	
7	SERIES 746--LPA DRY ACCELERATOR ASSEMBLY	VICTAULIC
8	SYSTEM PRESSURE GAGE	VICTAULIC
9	SERIES 757 REGULATED AIR MAINTENANCE TRIM ASSEMBLY	VICTAULIC
10	WATER SUPPLY PRESSURE GAGE	VICTAULIC
11	2" DRAIN CONNECTION KIT	VICTAULIC
12	4" CHECK VALVE WITH RUBBER CLAPPER	
13	AIR SUPPLY PRESSURE SWITCH	VICTAULIC
14	4" FLANGED /SCREWED ELBOW 175# WDG	
15	SERIES 776 LOW PRESSURE ACTUATOR	VICTAULIC
16	MODEL G3S-30 AIR COMPRESSOR	JENNY

This document has been reviewed and is UNCLASSIFIED and NOT UCN. This review does not constitute clearance for public release.

192 *DIG. SIG.

Authorized Derivative Classifier	Date
----------------------------------	------

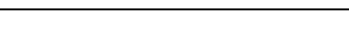
NOTE:

PIPING MAY VARY DUE TO FIELD CONDITIONS. DETAILS ARE NOT LIMITED TO SPECIFIC BUILDINGS, THE DETAILS MAY APPLY TO OTHER BUILDINGS.

THE VICTAULC DRY VALVE SERIES 768 AND THE TRIM PACKAGES REQUIRED FOR INSTALLATION ARE DESCRIBED IN FIRE PROTECTIVE PRODUCTS—DEVICES SERVICE DOCUMENT 30.80 PAGES 1 THRU 15.

* DESIGN MANAGER:
APPROVAL AND DATE

BASE DOCUMENT: X-330-7832-M REVISION 0

REFERENCE DRAWINGS			OPEN CHANGES			BASE DOCUMENT: X-330-7832-M REVISION 0											CARL S. HUNT DRAWN		7/29/08		UNITED STATES ENRICHMENT CORPORATION									
X-330-SP 6-004 DX-761-2958-M X-330-A-34980																	DAN O'DELL CHECKED		10/15/08		 USEC UNITED STATES ENRICHMENT CORPORATION P. O. BOX 628 PIKETON, OHIO 45661-0628									
																	DAN O'DELL ENG		10/15/08		TITLE									
A01 CFC PER ESO E6663-001						CAL MET DIGITAL SIGNATURE								STEPHANIE MC LAUGHLIN DISCIPLINE MANAGER			10/16/08		X-330 FIRE PROTECTION SPRINKLER AND RISER DETAILS											
0' AS BUILT FOR ESO #E2931						CSH DRO S. MC LAUGHLIN					10/16/08			APPROVALS			DATE													
REV DESCRIPTION						DWN ENG		DISC. MGR.			DATE		SCALE AS NOTED			FACILITY X-330			DWG NO. X-330-7832-M								REV A01			
INITIALS APPROVAL																														